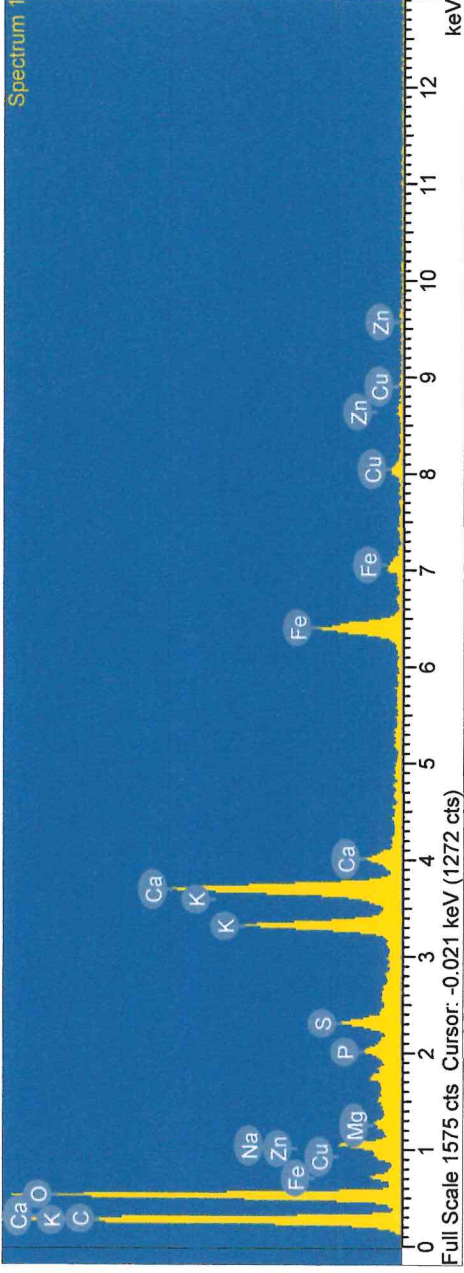


MA47613

1/22/2009 5:03:22 PM

Project: MA47613
Owner: jbarabe
Site: Site of Interest 1

Sample: Sample 1
Type: Default
ID: Black Ink text



Processing option : All elements analyzed (Normalised)
Number of iterations = 5

Standard :

- C CaCO3 1-Jun-1999 12:00 AM
- O SiO2 1-Jun-1999 12:00 AM
- Na Albite 1-Jun-1999 12:00 AM
- Mg MgO 1-Jun-1999 12:00 AM
- P GaP 1-Jun-1999 12:00 AM
- S FeS2 1-Jun-1999 12:00 AM
- K MAD-10 Feldspar 1-Jun-1999 12:00 AM
- Ca Wollastonite 1-Jun-1999 12:00 AM
- Fe Fe 1-Jun-1999 12:00 AM
- Cu Cu 1-Jun-1999 12:00 AM
- Zn Zn 1-Jun-1999 12:00 AM

Element	App Conc.	Intensity Corr.	Weight%	Weight% Sigma	Atomic%
C	91.36	0.8463	43.36	1.00	54.08
O	45.86	0.4207	43.77	0.90	40.99
Na	2.18	0.5499	1.59	0.18	1.04
Mg	0.28	0.5394	0.21	0.07	0.13
P	0.81	1.2075	0.27	0.05	0.13
S	1.32	0.9184	0.58	0.05	0.27
K	5.89	1.0763	2.20	0.08	0.84
Ca	9.33	0.9915	3.78	0.11	1.41
Fe	6.80	0.8166	3.34	0.13	0.90
Cu	1.21	0.7755	0.63	0.09	0.15
Zn	0.54	0.7742	0.28	0.09	0.06
Totals			100.00		

Comment:

EDS spectrum of Sample 1, black ink from text. (MA47613)

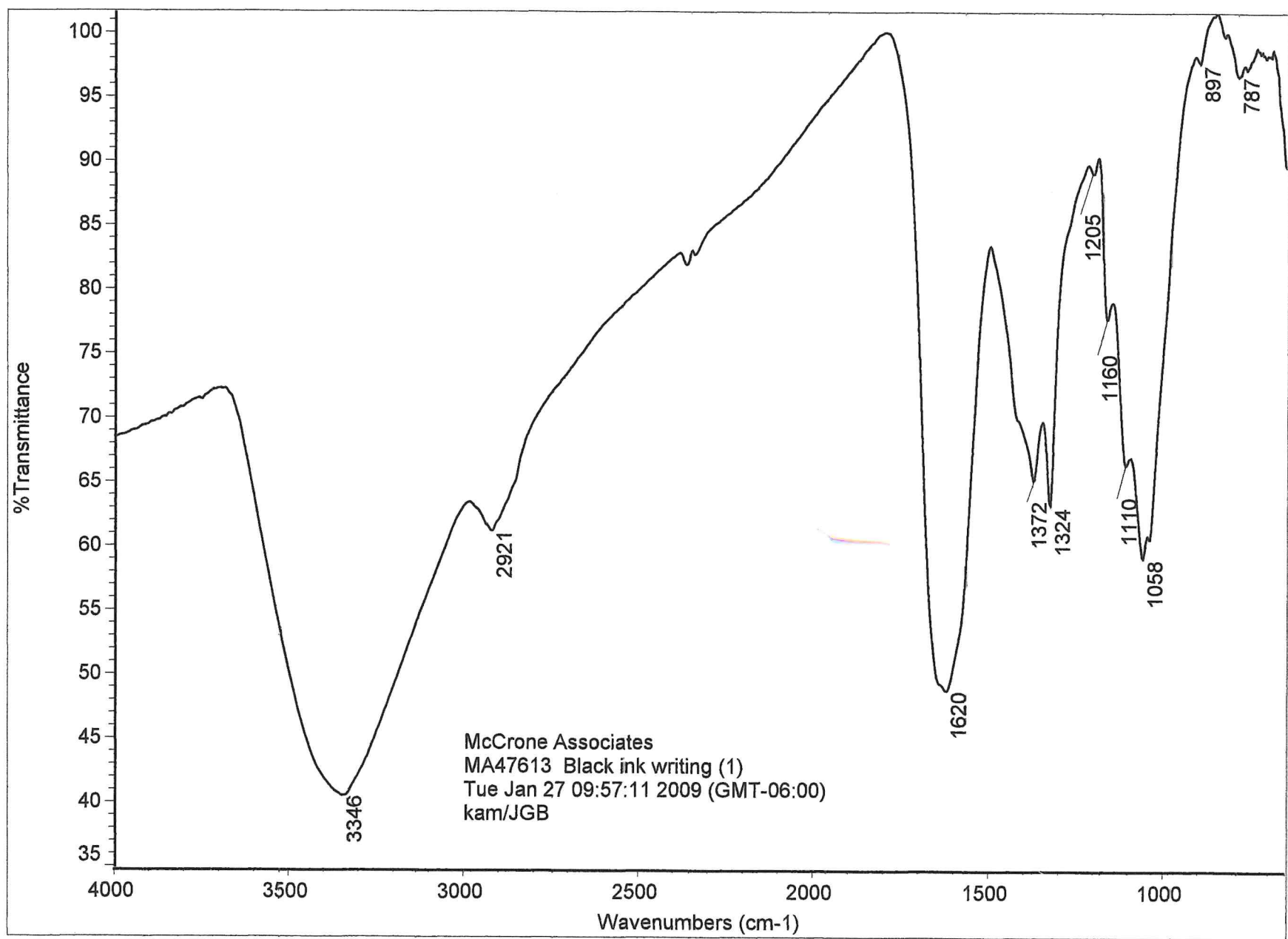


FIGURE 1C – IR spectrum of Sample 1, black ink from text. (MA47613)

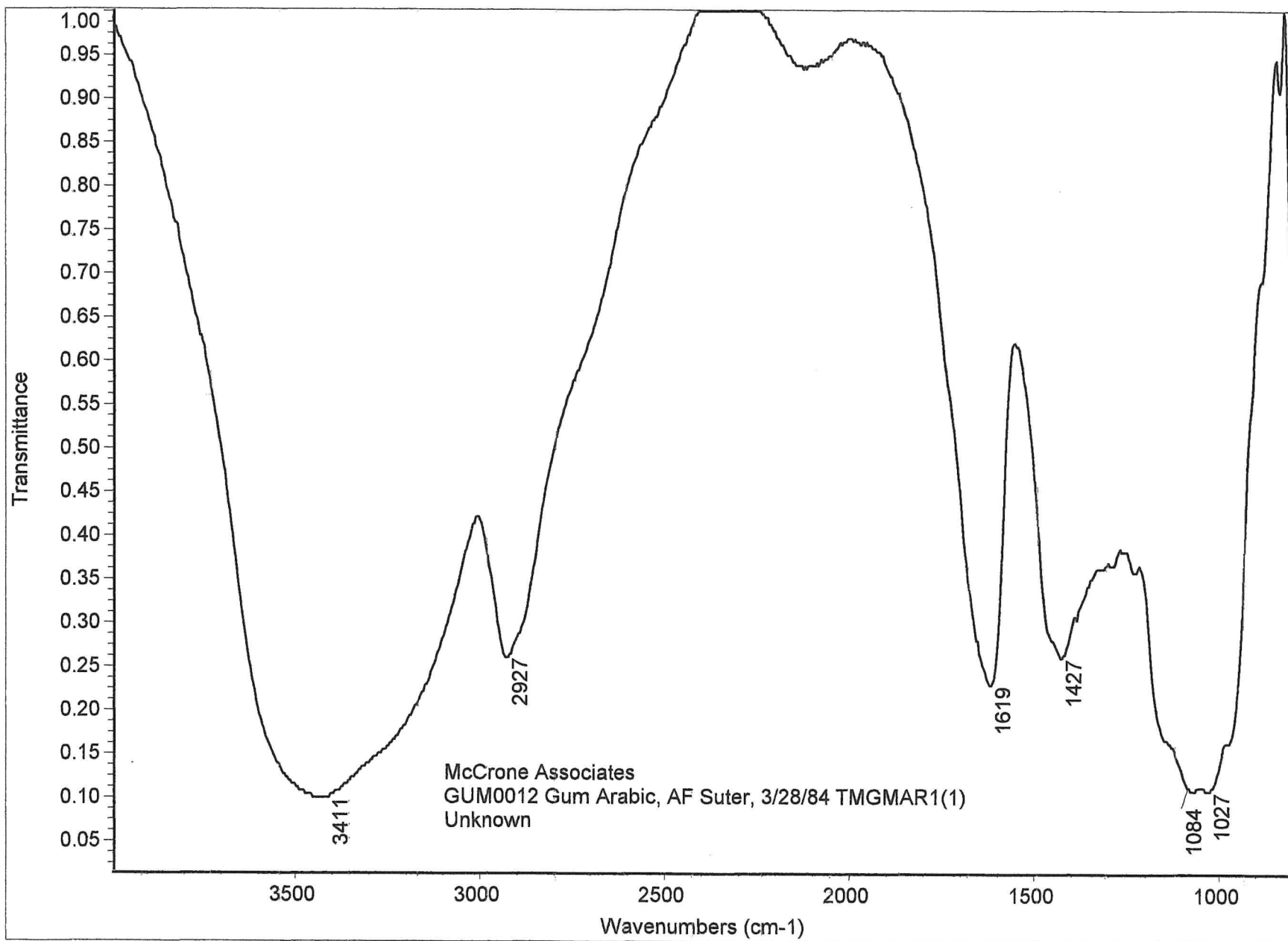


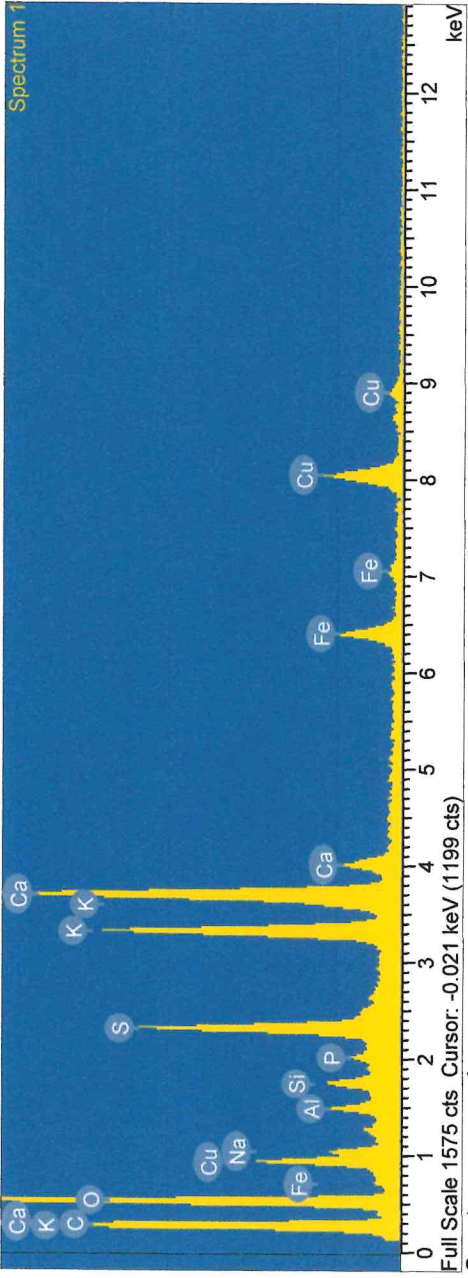
FIGURE 1D – IR reference spectrum of gum Arabic. (MA47613)

MA47613

1/22/2009 5:03:31 PM

Project: MA47613
Owner: jbarabe
Site: Site of Interest 1

Sample: Sample 2
Type: Default
ID: Black ink drawing



Full Scale 1575 cts Cursor: -0.021 keV (1199 cts)

Spectrum processing :

No peaks omitted

Processing option : All elements analyzed (Normalised)

Number of iterations = 6

Standard :

- C CaCO3 1-Jun-1999 12:00 AM
- O SiO2 1-Jun-1999 12:00 AM
- Na Albite 1-Jun-1999 12:00 AM
- Al Al2O3 1-Jun-1999 12:00 AM
- Si SiO2 1-Jun-1999 12:00 AM
- P GaP 1-Jun-1999 12:00 AM
- S FeS2 1-Jun-1999 12:00 AM
- K MAD-10 Feldspar 1-Jun-1999 12:00 AM
- Ca Wollastonite 1-Jun-1999 12:00 AM
- Fe Fe 1-Jun-1999 12:00 AM
- Cu Cu 1-Jun-1999 12:00 AM

Element	App Conc.	Intensity Corr.	Weight% Sigma	Weight% Atomic%
C	93.99	0.6746	40.73	52.55
O	58.33	0.4054	42.05	40.73
Na	1.98	0.5430	1.06	0.72
Al	1.16	0.6654	0.51	0.29
Si	1.21	0.7783	0.46	0.25
P	0.69	1.1904	0.17	0.08
K	6.90	0.9107	2.21	1.07
Ca	11.45	1.0633	3.15	1.25
Fe	15.15	0.9763	4.54	1.75
Fe	4.51	0.8289	1.59	0.44
Cu	9.47	0.7824	3.54	0.86

Totals 100.00

Comment:

FIGURE 2B
EDS spectrum of Sample 2, black ink from drawing. (MA47613)

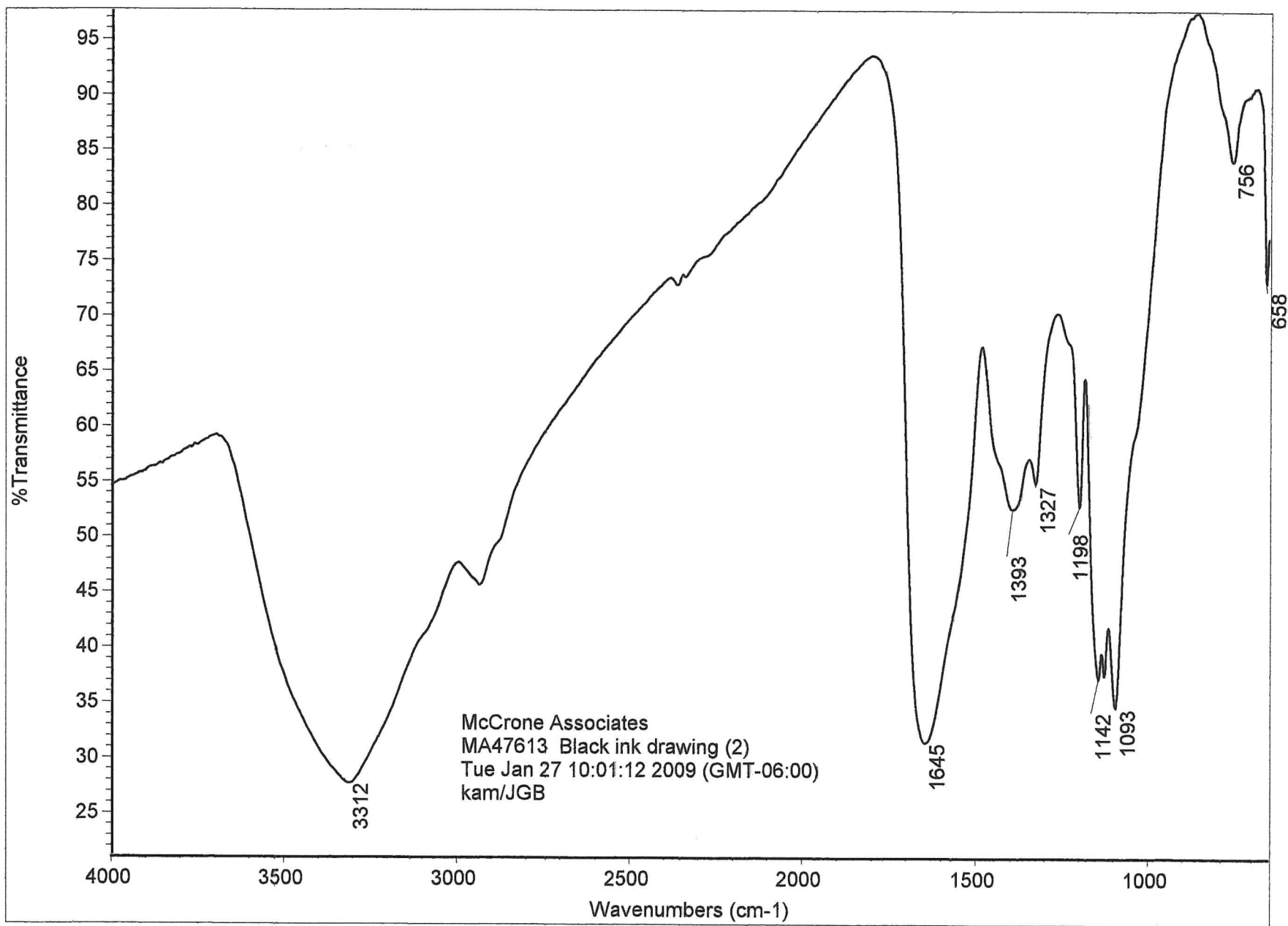


FIGURE 2C – IR spectrum of Sample 2, black ink from drawing. (MA47613)

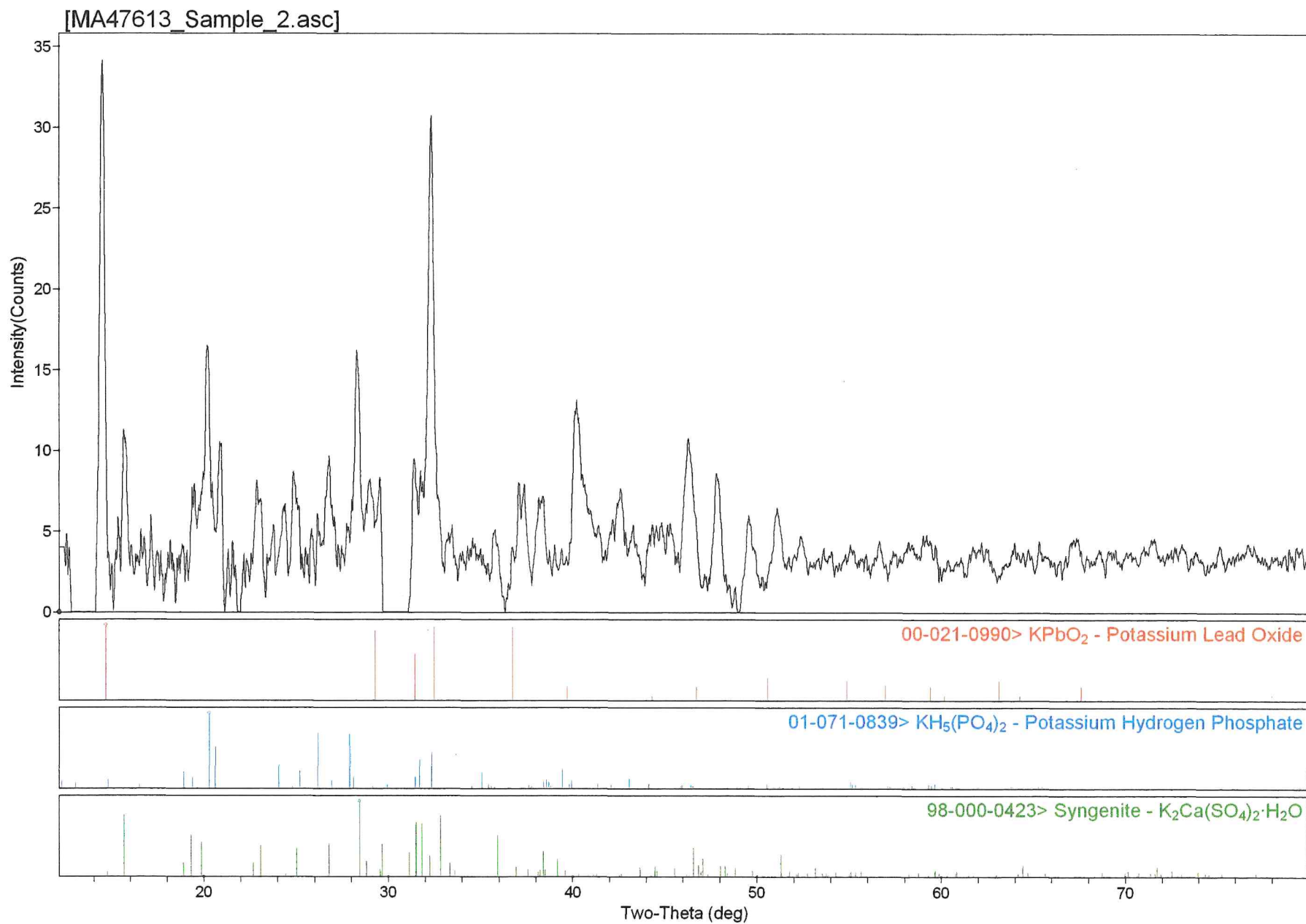


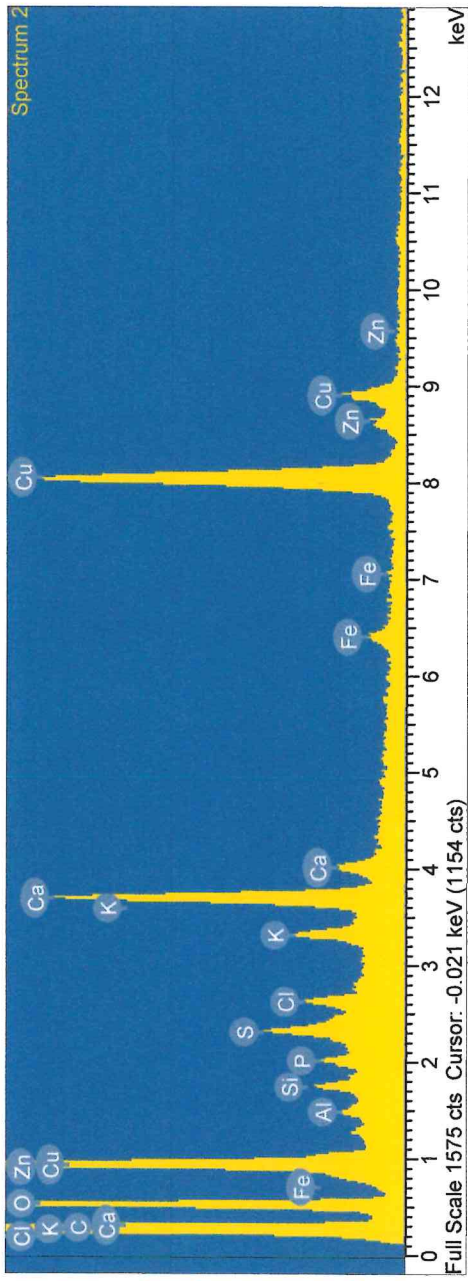
FIGURE 2D – XRD pattern of Sample 2, black ink from drawing. (MA47613)

MA47613

1/22/2009 5:03:50 PM

Project: MA47613
Owner: jbarabe
Site: Site of Interest 1

Sample: Sample 3
Type: Default
ID: Green paint



Processing option : All elements analyzed (Normalised)
Number of iterations = 6

Standard :

- C CaCO3 1-Jun-1999 12:00 AM
- O SiO2 1-Jun-1999 12:00 AM
- Al Al2O3 1-Jun-1999 12:00 AM
- Si SiO2 1-Jun-1999 12:00 AM
- P GaP 1-Jun-1999 12:00 AM
- S FeS2 1-Jun-1999 12:00 AM
- Cl KCl 1-Jun-1999 12:00 AM
- K MAD-10 Feldspar 1-Jun-1999 12:00 AM
- Ca Wollastonite 1-Jun-1999 12:00 AM
- Fe Fe 1-Jun-1999 12:00 AM
- Cu Cu 1-Jun-1999 12:00 AM
- Zn Zn 1-Jun-1999 12:00 AM

Element	App Conc.	Intensity Corr.	Weight% Sigma	Weight% Atomic%
C	260.89	0.7563	57.09	70.49
O	58.57	0.3573	27.13	25.15
Al	0.49	0.6358	0.13	0.07
Si	1.07	0.7532	0.24	0.12
P	1.50	1.1607	0.21	0.10
S	2.00	0.8913	0.37	0.17
Cl	1.58	0.7963	0.33	0.14
K	2.73	1.0608	0.43	0.16
Ca	13.53	1.0013	2.24	0.83
Fe	1.72	0.8907	0.32	0.08
Cu	50.77	0.7875	10.67	2.49
Zn	4.05	0.7851	0.85	0.19
Totals			100.00	

Comment:

FIGURE 3C
EDS spectrum of Sample 3, green paint, Spectrum 2. (MA47613)

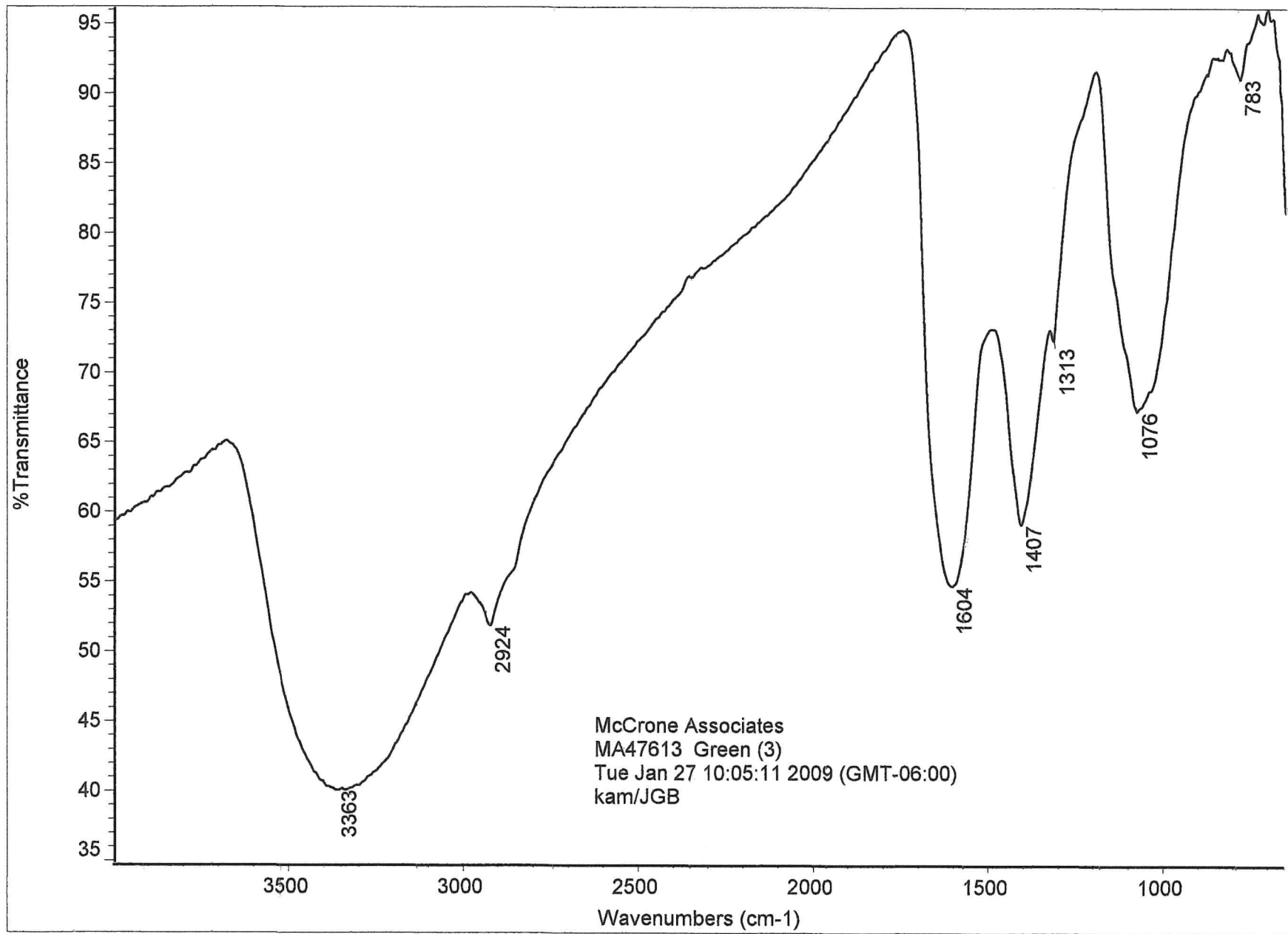


FIGURE 3D – IR spectrum of Sample 3, green paint. (MA47613)

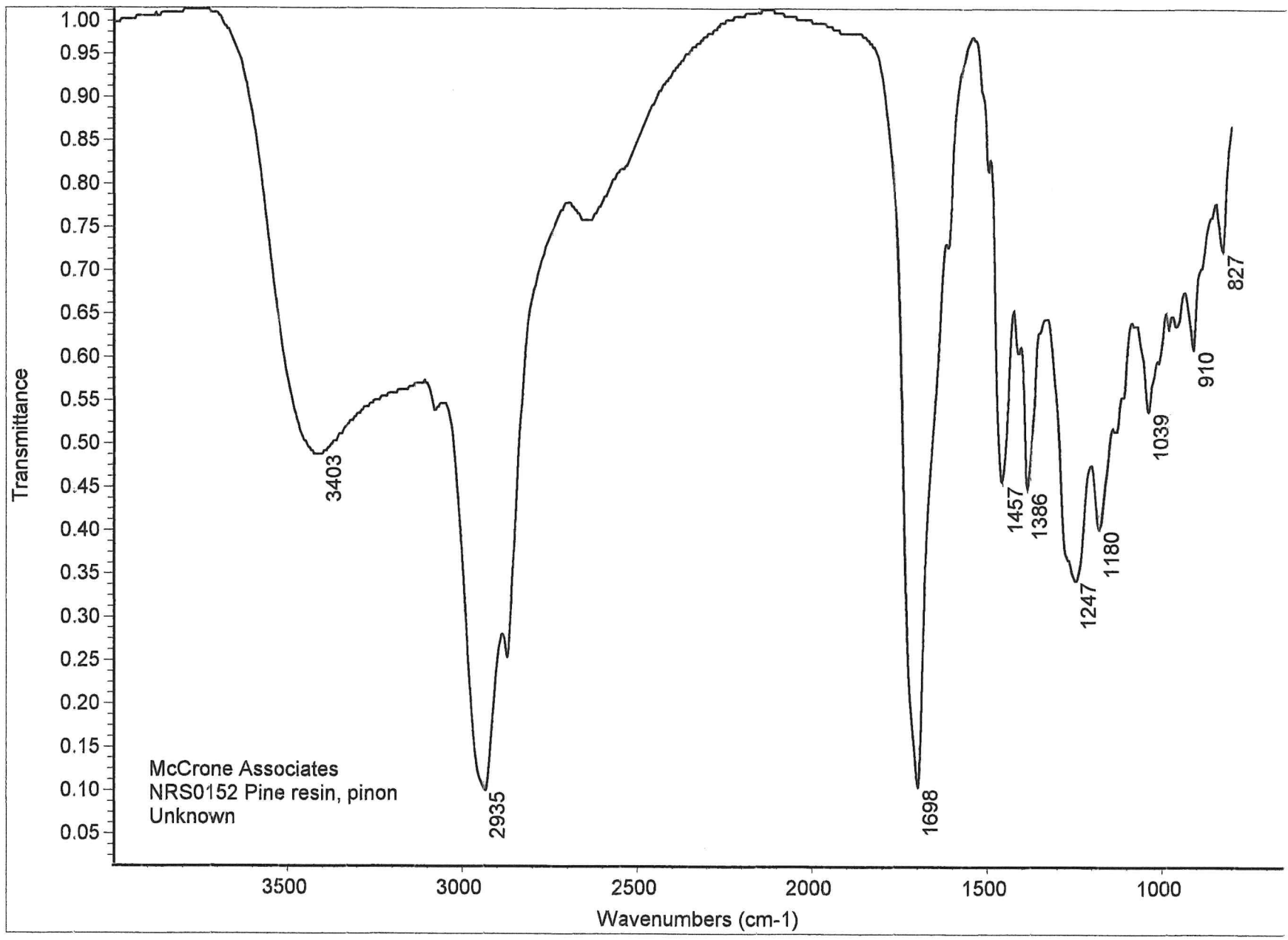


FIGURE 3E – IR reference spectrum of pine resin. (MA47613)

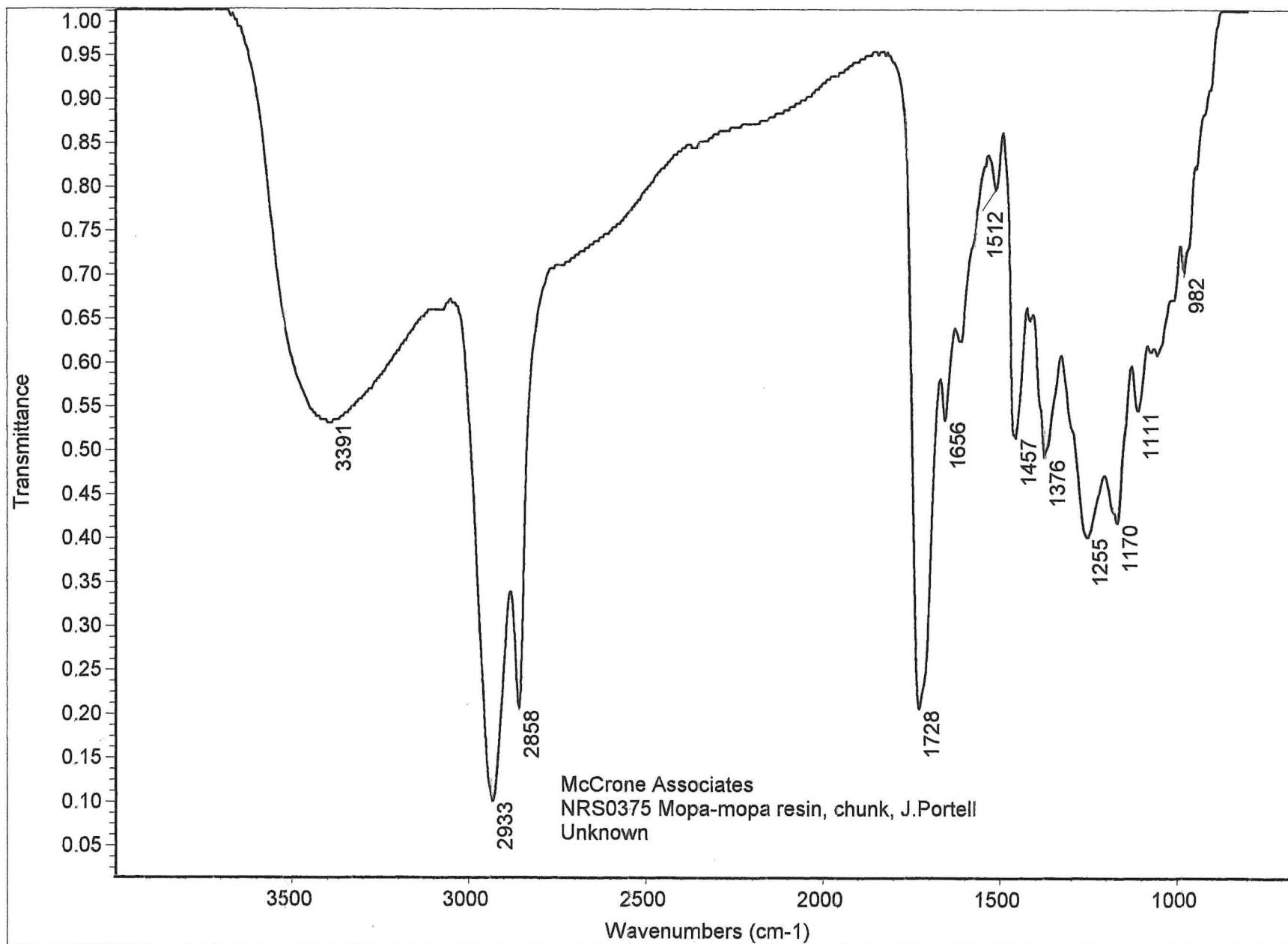


FIGURE 3F – IR reference spectrum of mopa-mopa resin. (MA47613)